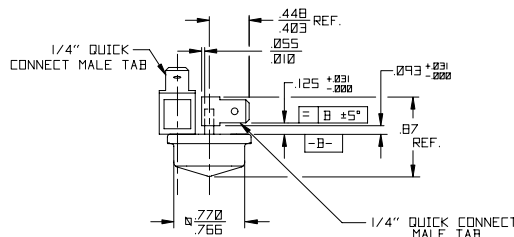
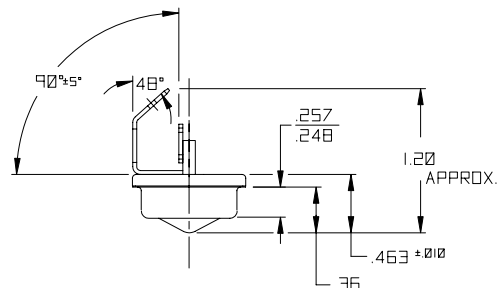
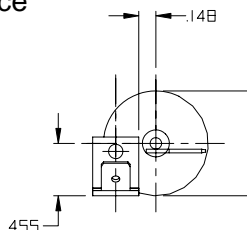


Part No: T03-1054 T03 Series Tip Over Switch – Mercury



- Features:**
- * Meets UL Heat Rise Specification
 - * Un-Insulated
 - * Form: NC/SPST/Vertical Mount as shown
 - * Angles Referenced from vertical
 - * Dual Male Fastons w/ Mounting Boss
 - * Hermetically Sealed
 - * Small Package Size
 - * High Current Capability
 - * Low Contact Resistance
 - * Long Life



Shown in normally closed position.
Tip over switches "break" when the electrode is tilted from the vertical and "make" when returned to the vertical.

Drawing dimensions in inches.

| | |
|---|---|
| Must Break Angle * : | 25° to 45° in any direction When switch is inverted there shall be no continuity * from vertical 0° reference |
| Switch Ratings: | |
| Max Switching Voltage: | 240VAC |
| Max Switching Current: | 12.5A, 1500W/120V resistive, 1500W Tungsten, 1/6hp 120V |
| Initial Contact Resistance (Max): | 25 milli Ohms |
| Stand Off Voltage (contact to contact): | 1240VAC |
| Operating Temperature: | -37° to 220° F / -38° to 105° C |
| Storage Temperature: | -40° to 356° F / -40° to 180° C |
| Typical number of operations at specified load: | 3,000,000 |
| G-Force Activation G-Level/Range: | N/A |
| Dimensions: | |
| Weight per 100pcs. Lbs / Kgs: | 3.20 / 1.45 |
| Body Length (less leads). Inches / Millimeters: | 0.87 / 22.1 |
| Maximum Diameter. Inches / Millimeters: | 0.94 / 24.0 |
| Materials: | |
| Termination Type: | ¼" Male Quick Connect |
| Lead wire length/skive/termination: | N/A |
| Finish: | Nickel |



© American Electronic Components Inc 2006

American Electronic Components Inc.,
1101 Lafayette Street, Elkhart, Indiana. USA
Tel: +1-574-295-6330 Fax: +1-574-293-8013
Email: sales@aecensors.com
<http://www.aecensors.com>