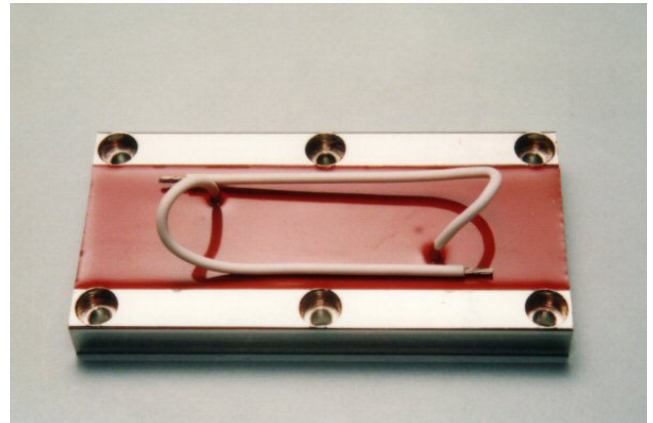


# POWER SOLUTIONS - WILLOW TECHNOLOGIES LTD

## CHASSIS MOUNTING NON-INDUCTIVE HIGH POWER RESISTORS

RPF-10, RPF-50,  
RPF-100, RPF-250



### Features and Applications

Chassis mounting high power resistor of 10W to 250W rating power.

Small in regard to thickness and with vertical terminal wires so suitable for high density electronic design.

Also, a decrease in the inductive effect in power electronics circuits will be realized.

Complete thermal conduction and heat dissipation design will be available.

Gate resistor and snubber resistor in power supply.

Load resistor and dumping resistor in high end audio.

Precision terminal resistor in RF amplifiers.

### Specifications and Performances

Specification Items	RPF-10	RPF-50	RPF-100	RPF-250	Test Conditions
Rating Power	10 Watt	50W	100W	250W	With heat sink, 2.8°C/W.
Resistance Range	10ohm~ 20Kohm	10ohm~ 1Kohm	10ohm~ 1Kohm	1ohm~ 1Kohm	
Nominal Resistance	E24	E24	E24	E24	Additionally, 2.0 and 5.0.
TCR	±50 ppm/°C	±50 ppm/°C	±250 ppm/°C	±250 ppm/°C	For -55 to +155 °C
Tolerance	±1% and ±5%	±1% and ±5%	±10%	±10%	
Operation Temp. Range	-55 - +155 °C		-55 - +120 °C		
Max. Applied Voltage	$E = \sqrt{P \cdot R}$				
Withstanding Voltage	1000 VDC	2KVDC	5KVDC	5KVDC	60 seconds.
Load Life	±(1.0 % + 0.05 ohm)				25°C, 90 min.ON, 30min.OFF, 1000hours.
Humidity	±(1.0 % + 0.05 ohm)				70°C, 90~95%RH, DC0.1W, 1000hours.
Temperature Cycle	±(0.25 % + 0.05 ohm)		±(1.0 % + 0.05 ohm)		-55°C, 30 min., +155°C30min., 20cycles. (-55°C, 30 min., +120°C30min., 20cycles. at RPF-100)
Short Time Overload	±(0.25 % + 0.05 ohm)				Rating watt×2.5, 2.5seconds, with heat sink.
Soldering Heat	±(0.25 % + 0.05 ohm)				350±5°C, 3seconds,
Solderability	Over 3/4 of round				230±5°C, 3seconds.
Insulation Resistance	Over 1000 Mohm				Between terminals and tab.
Vibration	±(0.25 % + 0.05 ohm)				

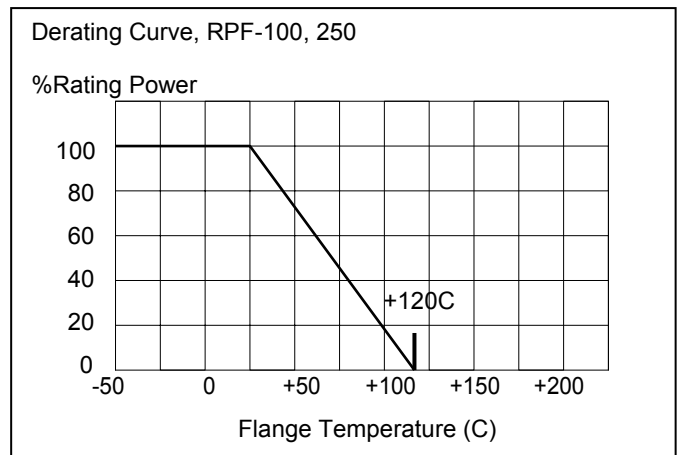
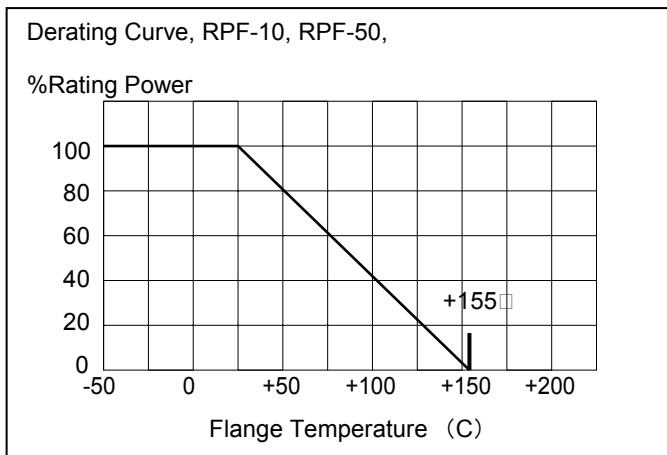
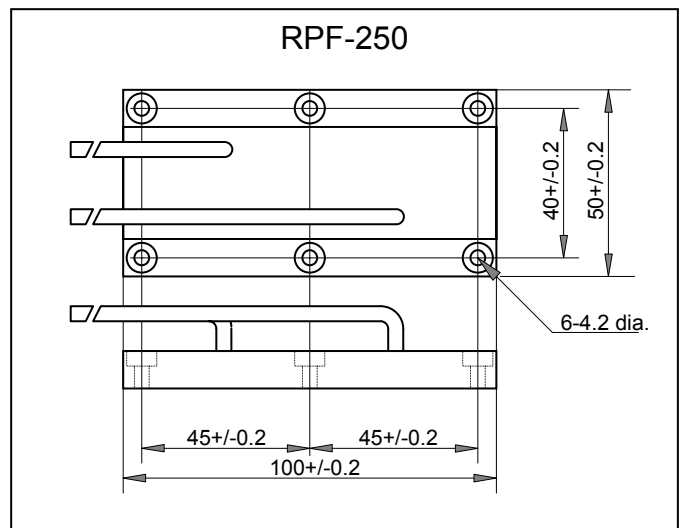
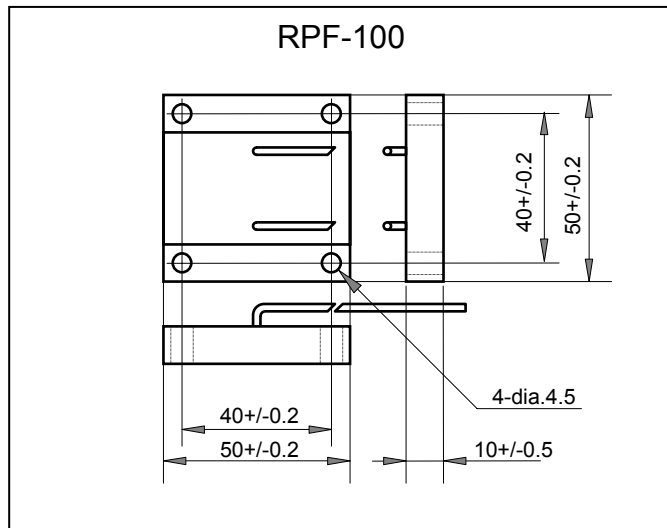
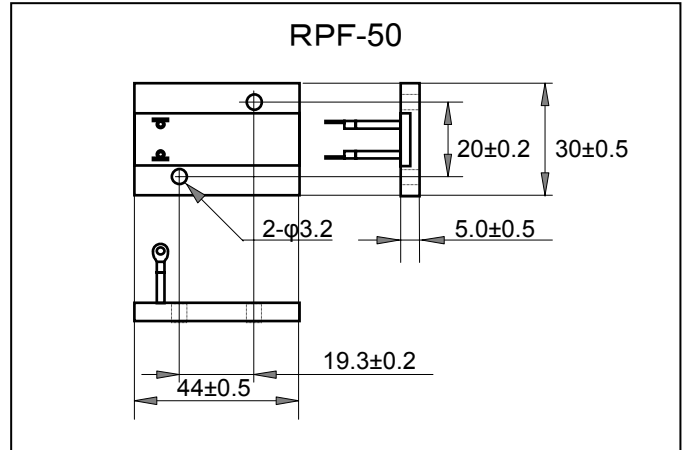
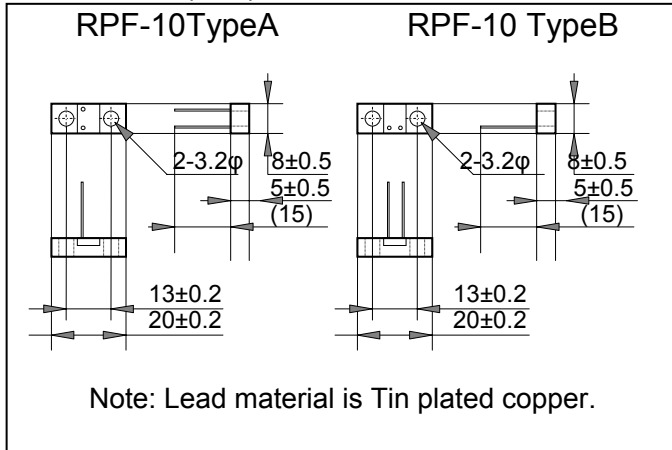
### Ordering Information

P/N	Type	TCR	Resistance	Tolerance	Remarks
RPF-10C10 ohmF000	RPF-10	C (50ppm/K)	10 ohm	F(1%)	
RPF-50C100 ohmF000	RPF-50	C (50ppm/K)	100 ohm	F(1%)	
RPF-100-999	RPF-100	H (250ppm/K)	Specification	K(10%)	999: three digit
RPF-250-999	RPF-250	H (250ppm/K)	Specification	K(10%)	999: three digit

Note: Resistance and length of wire terminals of RPF-100 and RPF250 are specified by individual specification draw. Please call factory. [info@willow.co.uk](mailto:info@willow.co.uk)

**CHASSIS MOUNTING NON-INDUCTIVE HIGH POWER RESISTORS  
RPF-10, RPF-50, RPF-100, RPF-250**

Dimensions (mm)



Note: RPF-20S was discontinued, please use RPF-50 high power resistor.