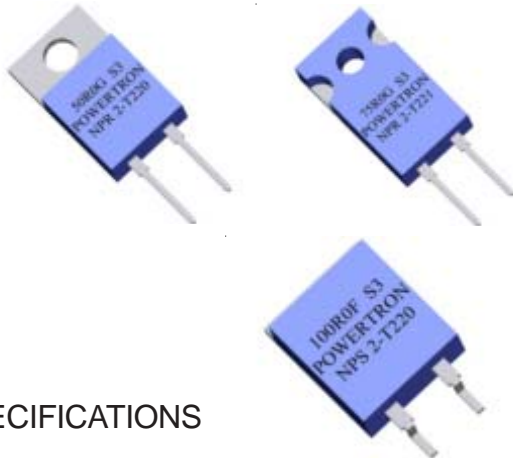


# NPR 2-T220/T221 NPS 2-T220



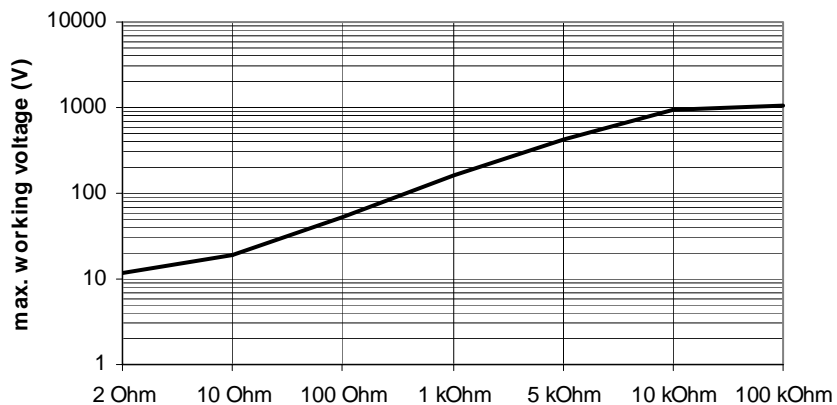
- High Power Rating
- Small Dimensions
- Easy to use
- Low Inductance
- TO220-Housing
- SMD Version available

## SPECIFICATIONS

### ELECTRICAL

<b>Resistor Range</b>	:	0R02 ... 100K
<b>Power Rating</b>	:	1.5 W (70°C) 30 W with heatsink
<b>Tolerances</b>	:	
<b>from 0R02</b>	:	2%, 5%
<b>from 1R0</b>	:	1%, 2%, 5%
<b>Thermal Resistance Rthj-c</b>	:	3.5 K/W
<b>Stability</b>	:	0.5%
<b>Temperatur Coefficient</b>	:	
0R02...0R049	:	±600 ppm/K
0R05...0R099	:	±300 ppm/K
0R1...100K	:	±100 ppm/K ±50 ppm/K upon request
<b>Voltage Proof</b>	:	2.0 kVDC

### Max. Voltage



### ENVIRONMENTAL

**Operating Temperature Range** : -40°C...155°C

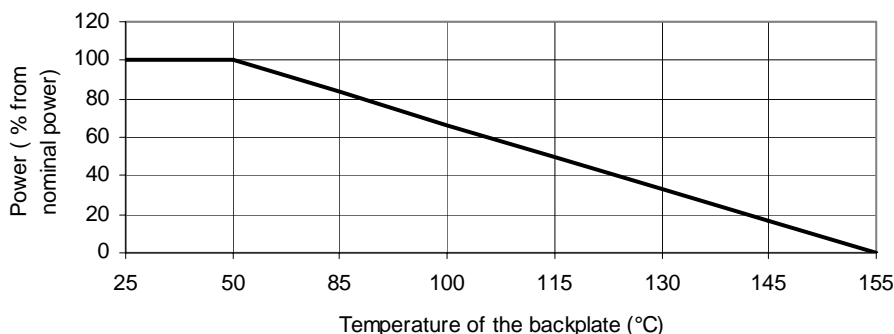
### MECHANICAL

<b>Resistor Material</b>	:	Thick Film
<b>Substrate</b>	:	Al <sub>2</sub> O <sub>3</sub>
<b>Housing</b>	:	Epoxy or PPS
<b>Connector Material</b>	:	Cu tinned
<b>Max. Torque backplate</b>	:	1 Nm / T221: 0.8 Nm

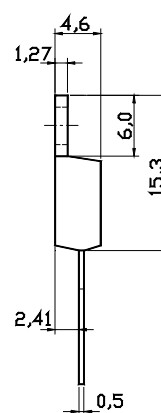
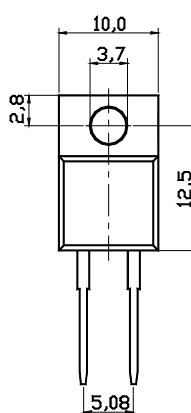
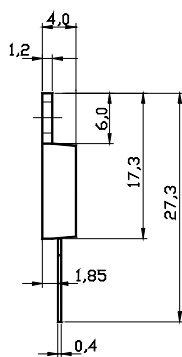
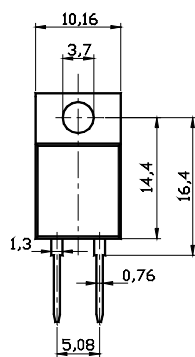
# NPR 2-T220/T221 NPS 2-T220



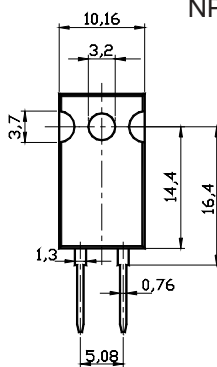
## DERATING CURVE



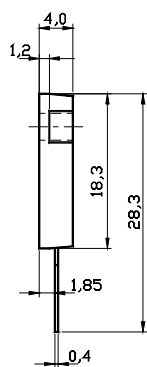
## DIMENSIONS



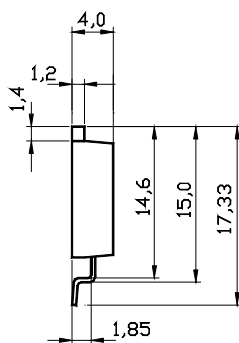
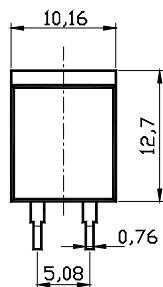
NPR2-T220X upon request possible  
(Version with longer leads)  
25W with heatsink



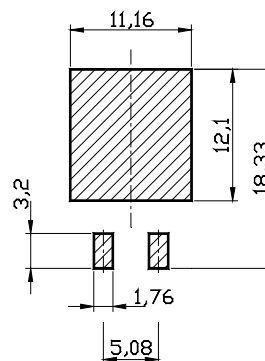
NPR 2-T220



NPR 2-T221



NPS 2-T220



Dimensions in mm

## HOW TO ORDER

NPR 2-T220 22K 1%