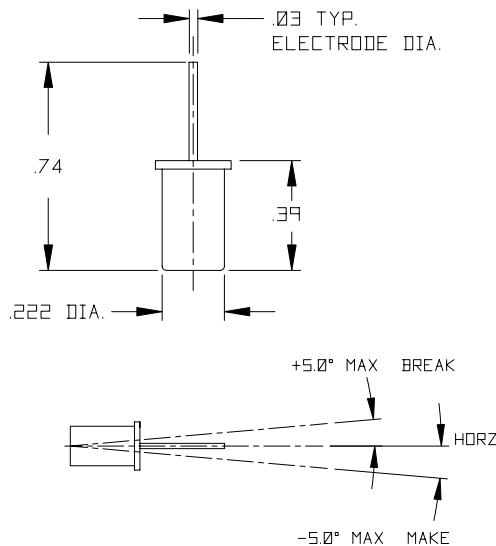
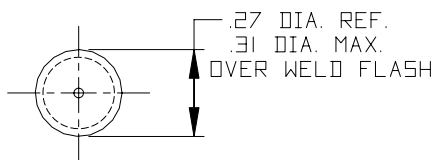


Part No: 20518 - A1/2 Series Tilt Switch – Non Mercury

- Features:**
- * RoHS Compliant
 - * Un-Insulated
 - * Form: NO/NC/SPST/Mount dependent
 - * Angles Referenced from Horizontal
 - * Single Electrode
 - * Hermetically Sealed
 - * Small Package Size
 - * Narrow Included Angle
 - * Long Life



Drawing dimensions in inches and (millimeters).

Tilt switches “make” when the electrode is tilted below horizontal and “break” when tilted above the horizontal. Total travel from “make” to “break” is the “Maximum included angle” shown below. The component to which the switch is attached must have a total tilt angle greater than the “Maximum included angle” for proper operation.

APPLICATION NOTE: SWITCH MUST BE MOUNTED IN APPLICATION SO THAT ROTATION TO MAKE MUST EXCEED 5.0° BELOW HORZ AND ROTATION TO BREAK MUST EXCEED 5.0° ABOVE HORZ.

Must Make / Break Angle * :

- 5° / + 5°

Maximum included Angle:

10°

* Make/break angles are electrode + (above) / - (below) 0° horizontal reference

Switch Ratings:

Max Switching Voltage 12 VDC

**American Electronic Components Inc.,
1101 Lafayette Street, Elkhart, Indiana. USA
Tel: +1-574-295-6330 Fax: +1-574-293-8013
Email: sales@aecsensors.com
<http://www.aecsensors.com>**