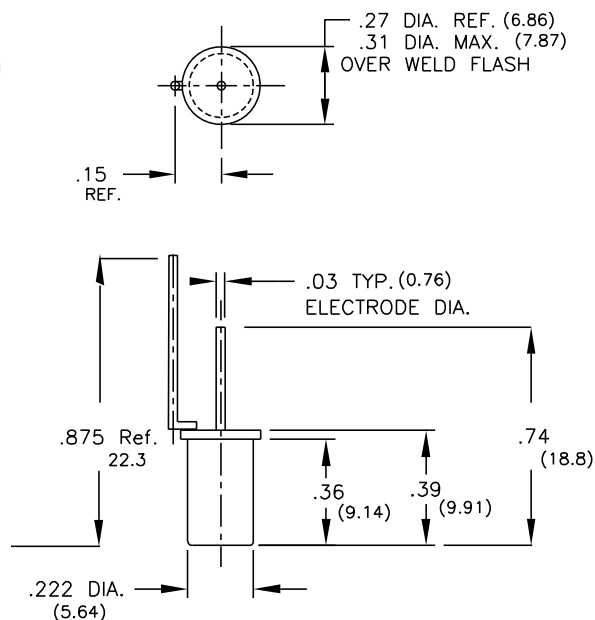


Part No: 20110 - A1/2 Series Tip Over Switch - Mercury



- Features:**
- * Un-Insulated
 - * Form: NO/SPST/Vertical Mount as shown
 - * Angles Referenced from Vertical
 - * Side Pin 2nd Electrode
 - * Omni-Directional
 - * Hermetically Sealed
 - * Small Package Size
 - * Long Life



Tilt switches "make" when the electrode is tilted below horizontal and "break" when tilted above the horizontal. Total travel from "make" to "break" is the "Maximum included angle" shown below. The component to which the switch is attached must have a total tilt angle greater than the "Maximum included angle" for proper operation.

Drawing dimensions in inches and (millimeters).

Must Make / Break Angle :	Must make between 45° and 75° from vertical
Maximum included Angle:	Load dependent
Switch Ratings:	
Max Switching Voltage	12V DC
Max Switching Current	10mA
Initial Contact Resistance (Max).	<10 Ohms
Stand Off Voltage (contact to contact)	1kV AC
Operating Temperature	-38° to 220°F / -38° to 105°C
Storage Temperature	-40° to 356°F / -40° to 180° C
Typical number of operations at specified load	10,000,000
G-Force Activation G-Level/Range	N/A
Dimensions:	
Weight per 100pcs. Lbs / Kgs:	0.33 / .015
Body Length (less leads). Inches / millimeters:	0.39 / 9.91
Maximum Diameter. Inches / millimeters:	0.31 / 7.9
Materials:	
Lead Wire Type	N/A
Lead wire length/skive/termination	N/A
Finish:	Tin (Sn) plate



© American Electronic Components Inc 2012

American Electronic Components Inc.,
 1101 Lafayette Street, Elkhart, Indiana. USA
 Tel: +1-574-295-6330 Fax: +1-574-293-8013
 Email: sales@aecensors.com
<http://www.aecensors.com>