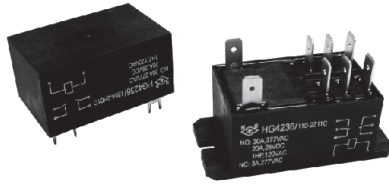


Two Pole Heavy Duty PCB / QC Power Relay

HG4236



FEATURES

- Two poles heavy duty power relay
- Up to 30A switching capacity
- DC and AC coil available
- 8 mm creepage distance and 4 KV dielectric
- PCB and QC termination

TYPICAL APPLICATIONS

- Industrial control
- Commercial applications

CONTACT RATING

Form	2 Form A (2H), 2 Form C (2Z)	
	NO	NC
Resistive	30A, 120VAC / 277VAC	3A, 28VDC / 277VAC
	20A, 28VDC	2A, 480VAC 1A, 600VAC
Motor	1HP, 120VAC 2.5HP, 250VAC	
TV	TV10	
Max. Switching Current	30A	
Max. Switching Voltage	277VAC	

CONTACT DATA

Material	AgSnInO	
Initial Resistance	50 mΩ, max. at 1A, 6VDC	
Service	Mechanical	5 x 10 ⁶ ops.
	Electrical	10 ⁵ ops. at 30A, 250VAC or 2HP, 250VAC

COIL DATA

Type	Coil Voltage Code	Nominal Voltage (VDC/VAC)	Resistance (Ω) ±10%		Must Operate Voltage max. (VDC/VAC)	Must Release Voltage min. (VDC/VAC)
DC	006	6	22		4.5	0.6
	012	12	86		9.0	1.2
	024	24	350		18.0	2.4
	048	48	1390		36.0	4.8
	110	110	7255		82.5	11.0
AC Frequency			50Hz	60Hz		
AC	024A	24	52	39	19.2	4.8
	120A	120	1390	950	96.0	24.0
	208A	208	3800	2841	166.4	41.6
	240A	240	5200	3800	192.0	48.0
	277A	277	7255	5200	221.6	55.4

CHARACTERISTICS

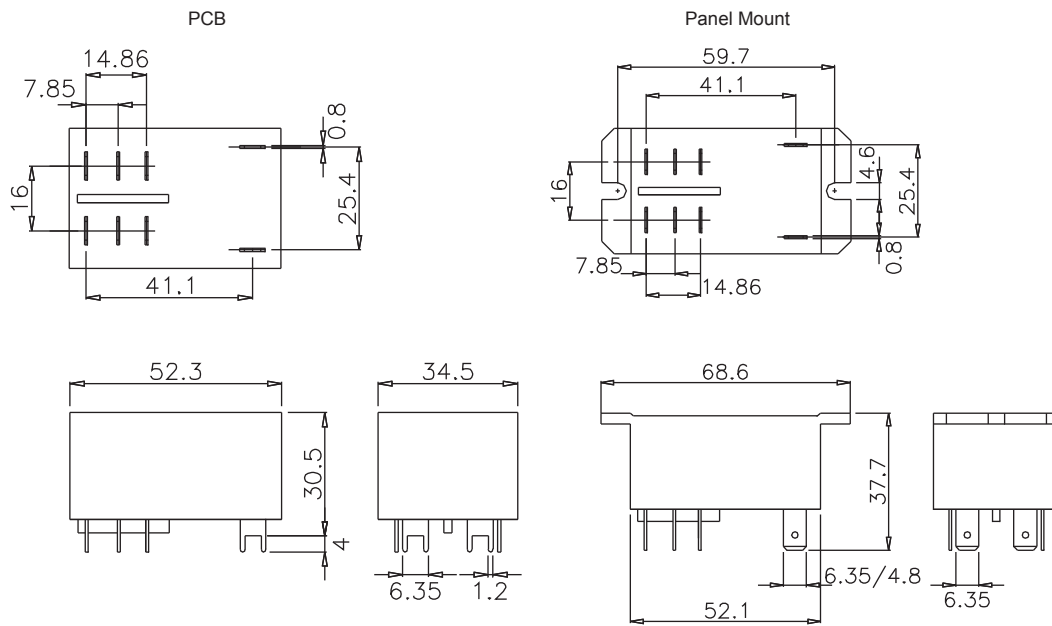
Operate Time	15 ms.
Release Time	10 ms.
Insulation Resistance	1000 MΩ, at 500 VDC, 50%RH
Dielectric Strength	1500 Vrms, 1 min. between open contacts 4000 Vrms, 1 min. between coil and contacts 2000 Vrms, 1 min. between poles
Shock Resistance	10 g, 11ms, functional; 100 g, destructive
Vibration Resistance	DA 1.65mm, 10 - 55 Hz
Power Consumption	DC Coil: 1.7 W; AC Coil: 4VA; approx.
Ambient Temperature	DC Coil: -55 to 85 C; AC Coil: -40 to 65 C operating
Weight	86 g, approx.

ORDERING DESIGNATION

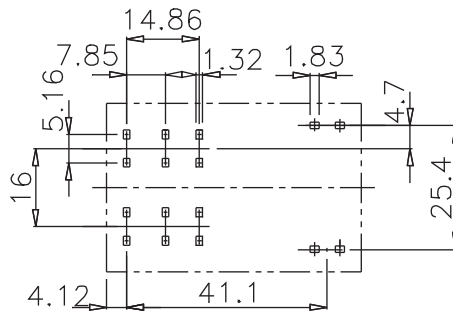
Example:	HG4236 /	240	A -	2Z	1	1	S	F	- P
Model									
Coil Voltage Code									
Nil: DC A: AC									
Contact Form									
2H: 2 Form A; 2Z: 2 Form C									
Mounting Version									
0: PCB; 1: Panel Mount									
Version									
1: Sealed; 2: Dust Cover									
Contact Material									
S: AgSnInO									
Thermal Class									
F: UL Class F									
P: RoHS Compliant (lead-free)									

OVERALL DIMENSIONS, MOUNTING HOLES AND WIRING DIAGRAM (mm)

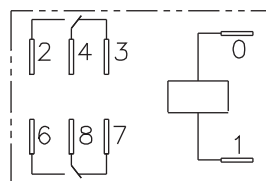
Overall Dimensions



Mounting Holes (Bottom View)



Wiring Diagram (Bottom View)



NOTES

1. All parameters, unless otherwise specified, are measured at ambient temperature 23°C.
2. Custom-made services available with operational quantity. Please let us know your special requirements.
3. Specifications subject to change without prior notice.

Willow Technologies Limited
 Shawlands Court
 Newchapel Road
 Lingfield
 Surrey RH76BL
 England
 Tel: +44 (0) 1342-835234
 Fax: +44 (0) 1342-834306
 email: sales@willow.co.uk