

FPS 2-T220 FPS 4-T220



- Extremely Low-Ohm
- Small Dimensions
- High Stability
- Low Inductance
- Low Electrical Noise
- Low Temperature Coefficient

SPECIFICATIONS

ELECTRICAL

Resistance Range	:	0R002 ... 50R
Power Rating	:	1.5 W (70°C) 15 W with heatsink
Thermal Resistance Rthj-c	:	4.8 K/W
Tolerance		
from 0R002	:	2%, 5%
from 0R010	:	1%, 2%, 5%
		4-terminal version also 0.1% and 0.25%
from 0R100	:	0.5%, 1%, 2%, 5%
		4-terminal version also 0.1% and 0.25%
Stability	:	0.1%, 0.2%, 0.5% (depends on the stress)
Temperature Coefficient	:	±15 ppm/K (20...60)°C / ±50 ppm/K (-40...130)°C FPS 2-T220 from R<0R2 TCR-Shift depends on resistor value (see table next page)
Max. Current	:	25 A
Insulation Resistance	:	300 VDC
Thermal EMF	:	< 1 µV/K

ENVIRONMENTAL

Operating Temperature Range	:	-40°C...130°C
------------------------------------	---	---------------

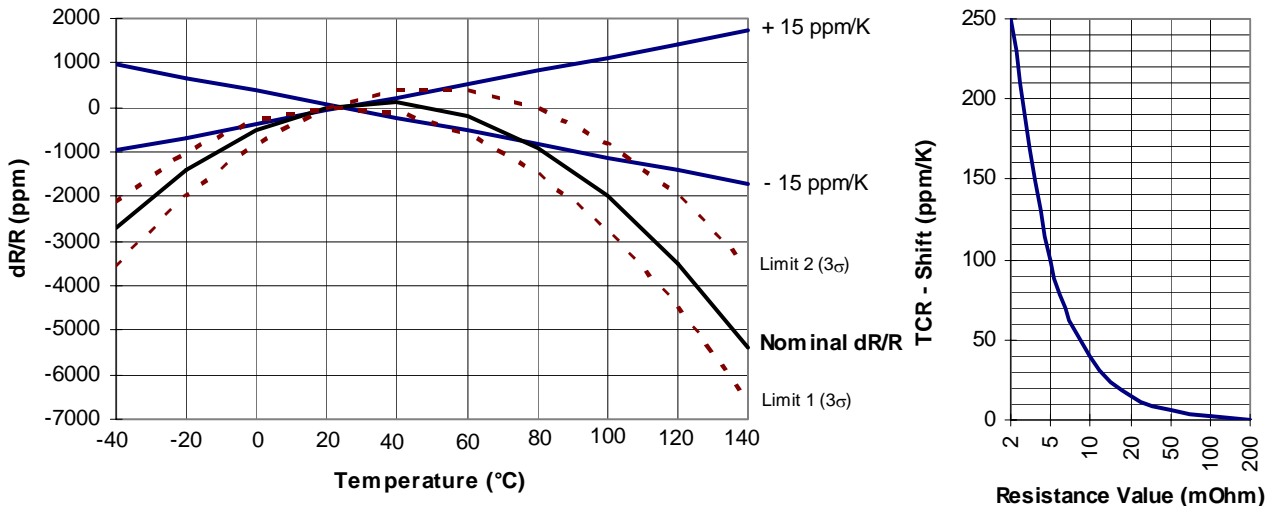
MECHANICAL

Resistor Material	:	Metalfilm CuNiMn (DIN 17471)
Substrate	:	anodized aluminium mounted on nickel Copperplate
Housing	:	PPS
Connectors	:	Cu tinned, 2-pin or 4-pin

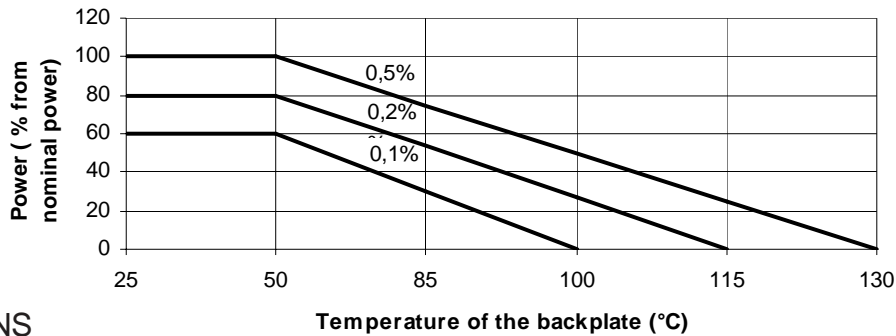
FPS 2-T220 FPS 4-T220



TEMPERATURE COEFFICIENT

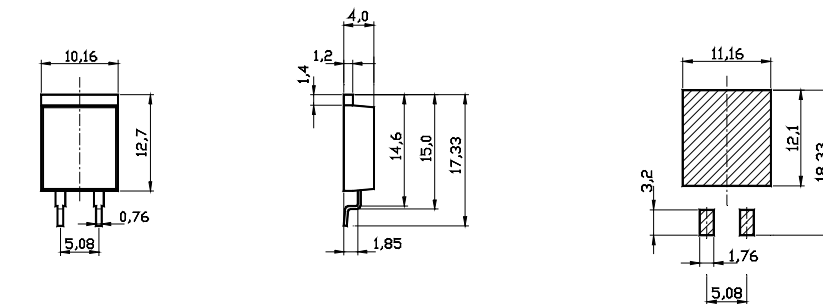


DERATING CURVE

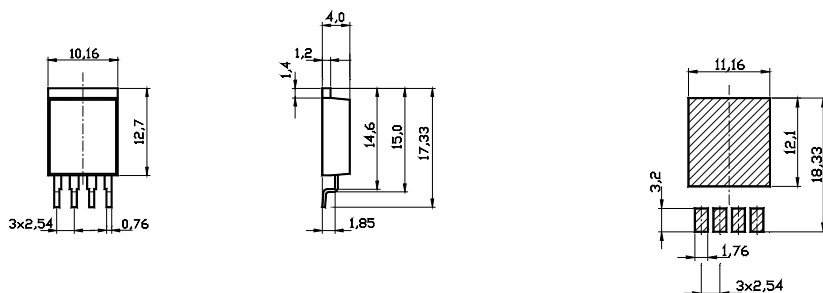


DIMENSIONS

FPS 2-T220



FPS 4-T220



HOW TO ORDER

FPS 2-T220 1R0 1%

FPS 4-T220 R010 0.5%